

# *Chalet Firmin*



*Beaumier*  
**L'ALPAGA**  
Alt. 1100 M MEGÈVE ALPES







## CHALET FIRMIN

Just outside Megève, perched at an altitude of 1100 metres and facing Mont-Blanc, discover a unique haven of peace. A chalet nestling in the heart of nature, in a cosy little hamlet.

Combining an intimate atmosphere with hotel services, Chalet Firmin is the ideal vessel for an exceptional holiday.

With a surface area of 255m<sup>2</sup>, this chalet has been designed in the purest Megevan tradition. It sleeps 12 to 14 people on 3 floors, with 6 bedrooms and 6 bathrooms. The large terraces and balconies are a natural invitation for guests to enjoy a moment of contemplation, facing the mountains.





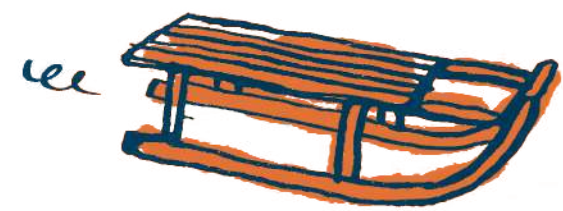


CHALET FIRMIN





CHALET FIRMIN







CHALET FIRMIN

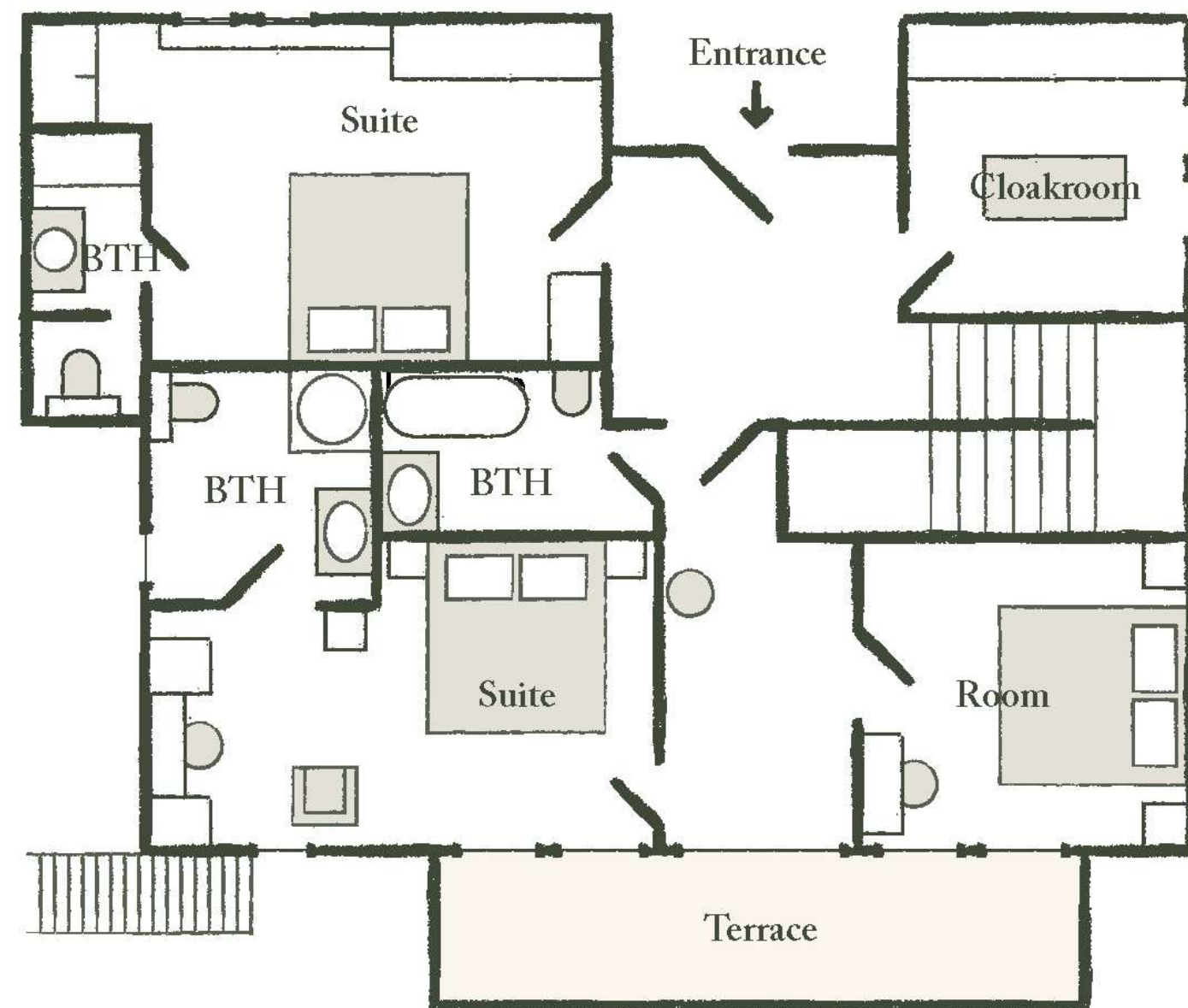








## THE GARDEN FLOOR

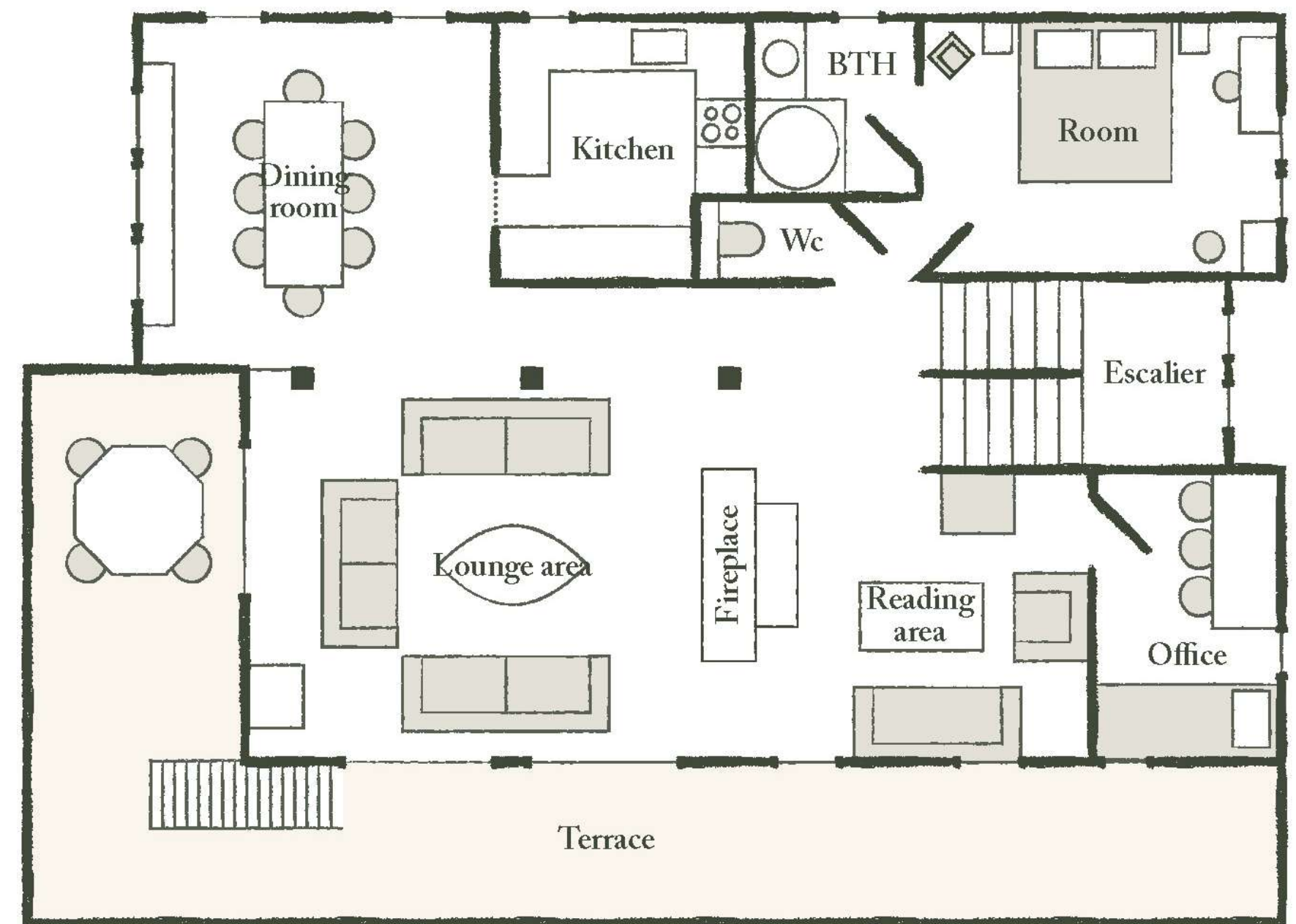


It includes 3 double bedrooms and 3 bathrooms with either a bathtub or a shower. Next to the entrance is located a cloakroom / ski-room. It benefits from a large terrace.



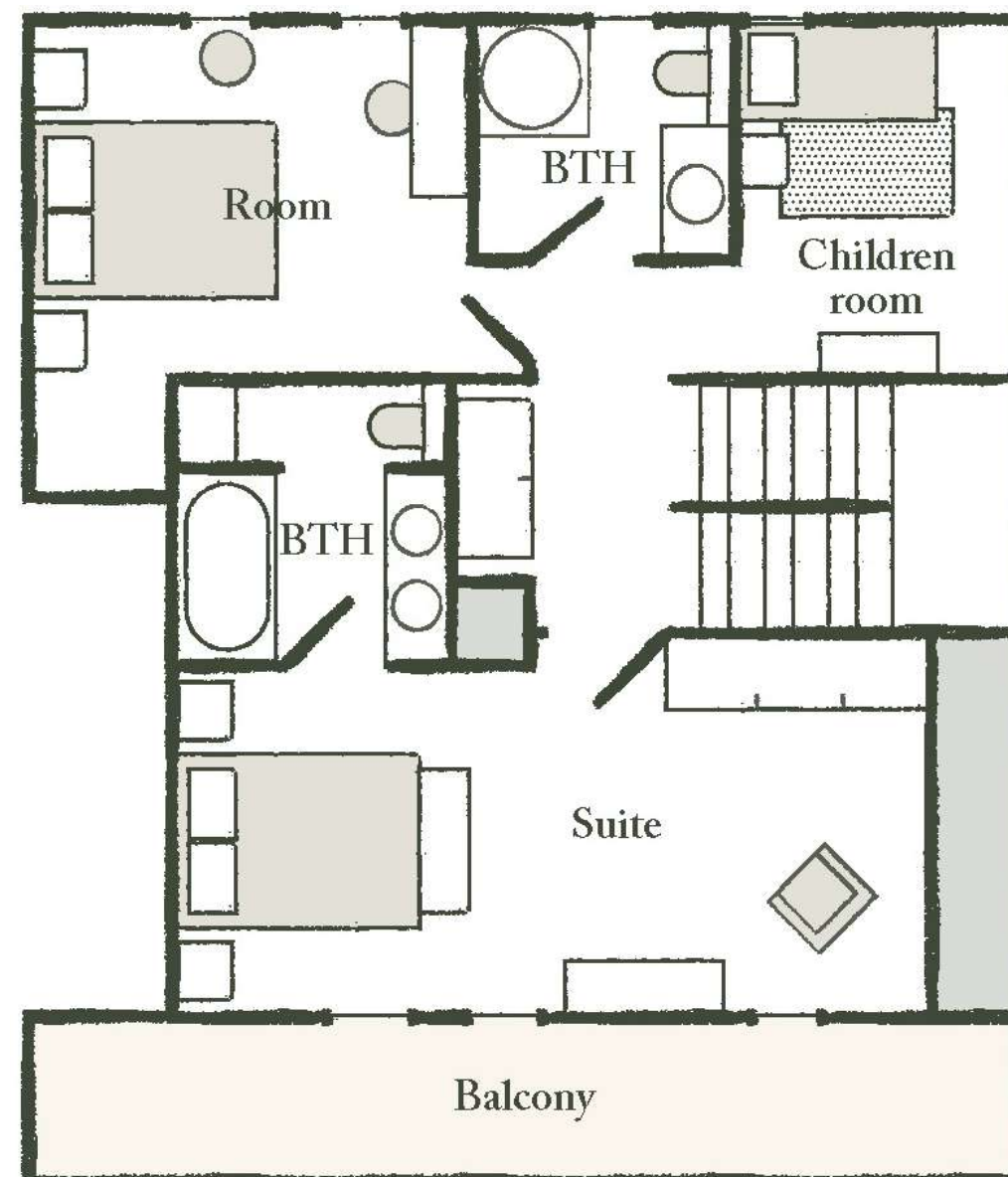
## THE MAIN FLOOR

Large living room with natural wood fireplace and large sofas. The large French windows open onto the corner balcony. Adjoining the lounge is the dining room, with its large oak table. The double bedroom has its own shower room. Next to the living room is a reading area and a small study/library with a single bed. Finally, there's the contemporary, fully-equipped kitchen, ideal for family get-togethers.





## THE TOP FLOOR



2 bedrooms with character and 2 bathrooms occupy this charming floor, under the wooden roof structure: the master bedroom with its en suite bathroom and private balcony is absolutely romantic. Finally, for young adventurers, there is a children's area under the roof structure with a single bed.



## THE HOTEL L'ALPAGA\*\*\*\*\*

Staying in Chalet Firmin also means having access to the areas and services of L'Alpaga:

### LA TABLE

*de l'Alpaga*

In 2023, the *La Table de l'Alpaga* restaurant was awarded 1 star in the Michelin Guide. This gastronomic restaurant offers a gourmet and sparkling cuisine prepared by our Chef Alexandre Baule, which puts the mountain in the spotlight and offers a contemporary and elegant setting.

### le bistrot

*de l'Alpaga*

This restaurant offers bistro lounge cuisine by Chef Alexandre Baule. It's the ideal place for an informal lunch or dinner.

### LE BAR

*de l'Alpaga*

Indoors or on the terrace, this is the perfect place to enjoy a refreshing drink or cocktail, prepared by our mixologist.

### LE SPA

*de l'Alpaga*

The *Spa de l'Alpaga* has a fun indoor pool with bubbles and massage jets, a hammam and two treatment rooms. Outside, and facing Mont-Blanc, the Scandinavian bath will allow you to relax in an exceptional setting.





## CHALET FIRMIN

### SERVICES INCLUDED

- Breakfast served in the restaurant
  - Internet access
  - Access to the spa  
*(leisure pool, hammam, Scandinavian bath, sauna facing Mont-Blanc and fitness area)*
  - Free shuttle service from 11am to 8pm
- Hotel taxes and services (excluding tourist tax)
- Hotel concierge service
  - Room service

### OPTIONAL SERVICES

- Private car with driver
- Private chef in chalet (evening or weekly)
- Breakfast delivery to chalet
- Secure covered parking







## CHALET FIRMIN

Because Megève is all about being outdoors and on the move, you can take advantage of a whole range of activities and experiences to get the most out of the area: cycling, hiking, canoeing, fishing, white-water sports, paragliding, hot-air ballooning or flying over the surrounding peaks in a plane or helicopter.





## CONTACT

**Sales Manager**  
Emily Hamilton

*e.hamilton.alpaga@beaumier.com*

+33 (0)6 31 15 65 19

+33 (0)4 50 91 48 72



### GDS

AMADEUS (IA) = YX : MVVALP

SABRE (AA) = YX : 4800

GALILEO/APOLLO (UA) = YX : 16209

WORLDSPAN (IP) = YX : GVAAL

PEGASUS (WB) = YX : 71986

---